

## How to configure Z-Wave module with ClodPi Labs ATOM Hub for Home Assistant?

ClodPi Labs ATOM Hub for Home Assistant can be integrated with Z-Wave module thereby easily you can build the Smart Home base on a DIY platform like the Raspberry and use an Open-Source software like Home Assistant to empower your Z-Wave network.

### Pre-Requisite:

- 1) We need to open up the ATOM Hub enclosure using a screw driver (PH0 / PH1)
- 2) Z-Wave hardware compatible module. Ex: [Z-Pi7](#)
- 3) 10 Pin FRC/IDC Female to Female connector with Flat Ribbon Cable 10 cm (*\*provided with the ATOM Hub device*)

### Steps:

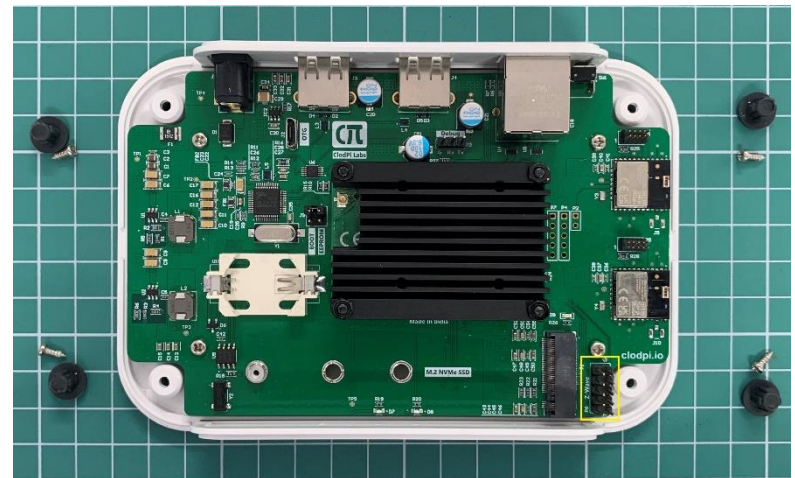
- 1) Take the device, do not connect to power and internet.



- 2) Keep the device upside down
- 3) Remove the rubber feet.
- 4) Take a screw driver (PH0 / PH1) and remove all the four screws

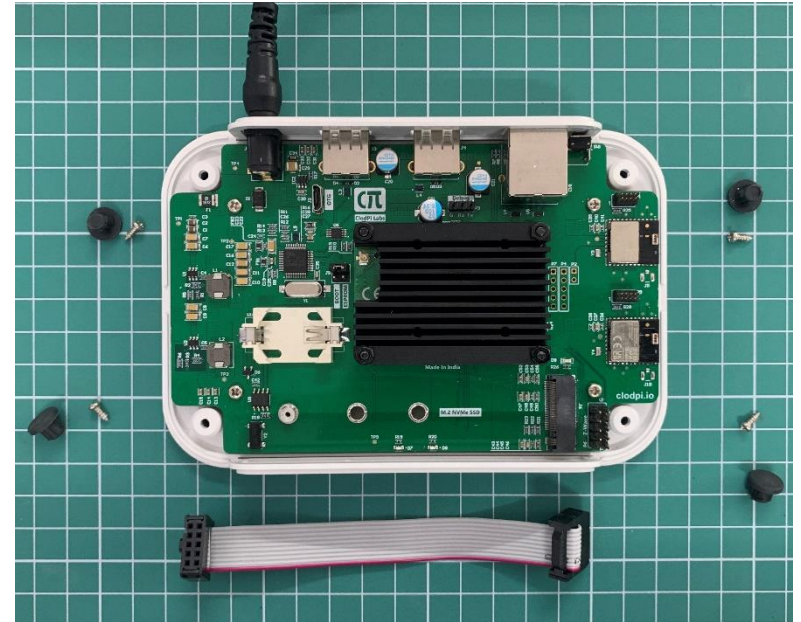


- 5) Cautiously pick the device and keep it in a way with cover is at the top
- 6) Remove the top cover
- 7) Observe PIN P6 set labelled 'Z-Wave'

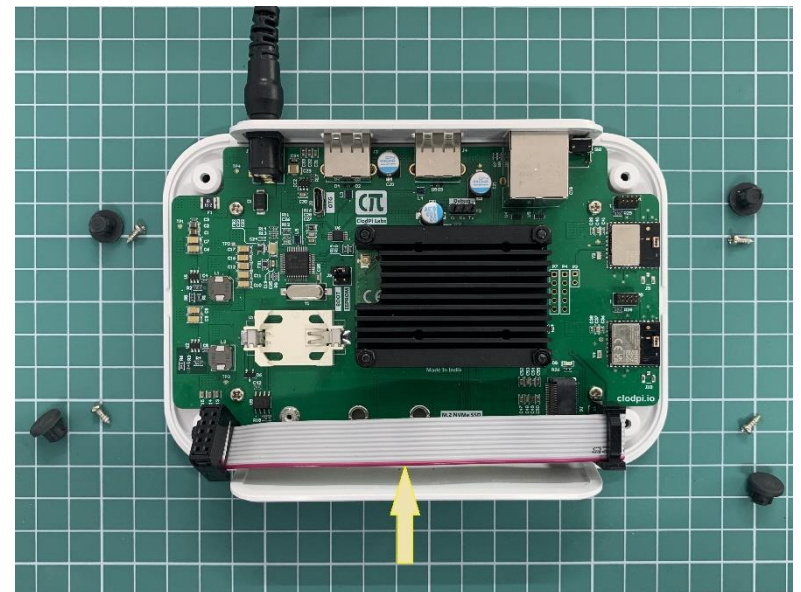


8) Prepare the IO/base Board for mounting:

- Take the “10 Pin FRC/IDC Female to Female connector with Flat Ribbon Cable 10 cm”. Refer adjacent image.



- Place the connector and fit on P6 as shown in next image.



9) Take The Z-Wave module (blue colored) and place it on the other end of the Connector as shown in adjacent image.

10) The module should now be ready for the next step.



11) Connect the power

12) Connect the ethernet

13) Your device is ready to use for your DIY Home Automation on Z-Wave network.